

# Deep-digging bucket

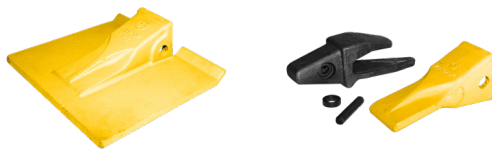
For all excavators in the 1.5–33 tonne weight classes

**Engcon deep-digging bucket** – Robust construction for tough jobs. A favourite for anyone needing to excavate and dig in difficult conditions where fast penetration and easy filling are prioritised, for example in trenching and other mass transfers requiring capacity. Like all Engcon buckets, the digging bucket has a long floor and cutaway sides to reduce drag when digging.

**The bucket can be fitted with the following accessories on request:**

- » Tooth kit\*
- » Tooth cover
- » Blade teeth

*\* When selecting a tooth kit, Engcon buckets are fitted with the Cat J system as standard equipment. For other tooth systems, check availability with Engcon.*



## Specifications

Model	DB02	DB02	DB03	DB05	DB06	DB07	DB09	DB11	DB12
Volume: (l)	70	90	120	160	200	250	350	400	500
Width: (mm)	450	550	550	600	600	700	700	700	800
Weight: (kg)	50	60	75	100	125	210	230	280	330
Quick hitch standard:	S30	S40	S40	S40	S40	S45	S45	S45	S60
Recommended machine weight: (t)	1.5–3	1.5–3	2–4	4–6	5–7	6–8	8–10	10–12	11–13

Model	DB13	DB14	DB16	DB18	DB21	DB26	DB29	DB32
Volume: (l)	600	650	750	900	1 100	1 400	1 600	1 800
Width: (mm)	850	900	1 000	1 000	1 100	1 300	1 450	1 700
Weight: (kg)	500	520	600	680	940	1 330	1 440	1 720
Quick hitch standard:	S60	S60	S60	S60	S70	S70	S70	S80
Recommended machine weight: (t)	11–13	13–16	15–17	17–20	19–22	24–27	27–31	31–33

**CHANGE THE WORLD OF DIGGING**

engcon Australia | 62 Power Street, St Marys, NSW 2760  
 Tel +61 2 7252 5279 | E-mail australia@engcon.com | Web engcon.com