

# Stone and sorting grab

## For all excavators in the 1,5–33 tonne weight classes



Engcon's stone & sieve grabs in the SG series are suitable for everything from sorting to light demolition works where a powerful grab is needed. Used in combination with Engcon's tiltrotators, the grabs provide the access you need, and they also come with EC-Oil automatic oil connection system as standard equipment.\*

### The advantages of SG grabs

- » The EC-Oil automatic quick connection system connects the hydraulics without the operator having to leave the cab.
- » The grab's claws are fitted with reversible wear bars.
- » A load valve and pressure accumulator maintain gripping force for extended periods and for better handling.
- » Complies with European safety standards.
- » Expander bushings in major joints.
- » Bolt-on bracket/attachment point makes switching brackets easy.

### Accessories:

- » Tooth kit for better grip.
- » Closed sides to convert the grab into a grab bucket.

\*Applies to grabs with S40–S80 top brackets.

The EC-Oil automatic quick hitch system is a free standard on all engcon's hydraulic tools with S40–S80 attachment.

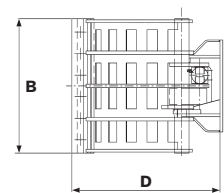
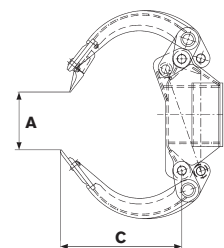


With teeth (accessory)

With closed sides (accessory)

### Specifications

Model	SG03	SG06	SG09	SG12	SG19	SG26	SG33
Grab width A: (max. mm)	750	1 110	1 365	1 660	1 790	1 990	2 575
Grab width A: (min. mm)	0	0	0	0	0	0	0
Cutting width B: (mm)	400	505	628	715	860	860	1 170
Jaw length C: (mm)	490	460	539	680	790	870	1 180
Height D: (mm)	550	580	748	790	960	1 070	1 360
Gripping force: (kN)	5,7	8,7	14	15	19	25	45
Max hydraulic pressure: (MPa)	22	22	22	22	22	22	22
Weight: (kg)*	108	180	268	425	646	755	1 400
Volume, with side plates: (l)	42	83	137	220	336	420	930
Grab area: (m <sup>2</sup> )	0,12	0,17	0,24	0,34	0,42	0,52	0,85
Recommended machine weight: (t)	1,5–3	3–6	6–9	10–12	12–19	18–26	24–33
Recommended tiltrotator:	EC02	EC204 EC206	EC206 EC209	EC209 EC214	EC214 EC219	EC219 EC226	EC226 EC233



\*Depending on attachment

## CHANGE THE WORLD OF DIGGING